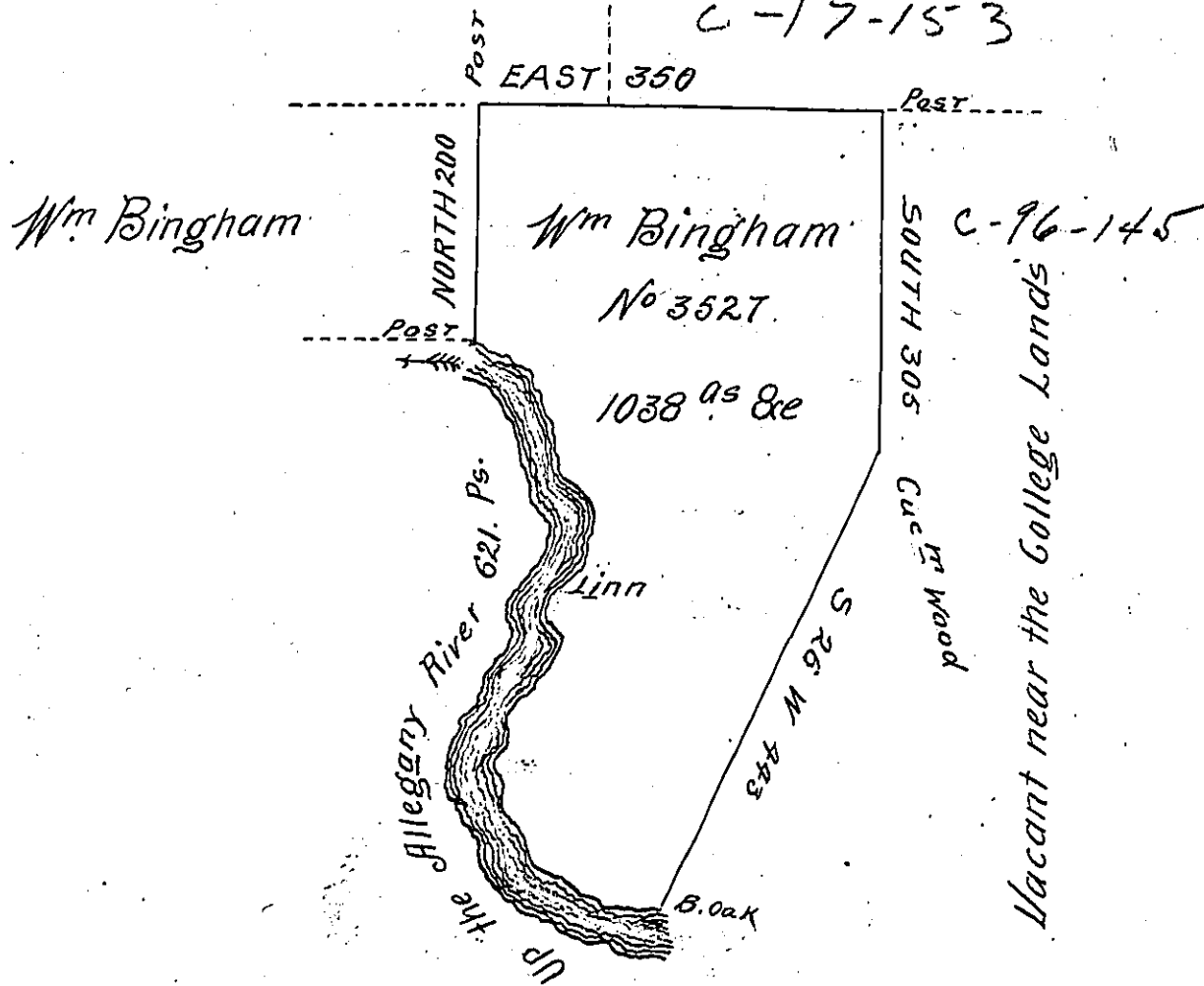


Wm Bingham

Courses & Distances up
the Allegany River
from the B. O.K.

No 3520
C-17-153

- N 65 W 140 Ps
- N 41 W 54
- N 11 W 34
- N 15 E 22
- N 41 E 36
- N 36 E 32
- N 5 W 36 Lyn-
- N 22 E 14
- NORTH - 56
- N 25 E 52
- N 4 W 22
- N 20 W 22
- N 13 W 45
- N 26 W 56 Post
- 621



In pursuance of a Warrant N. 3527 dated the 14th day of Decr 1792 Surveyed the 6th August 1794 To William Bingham The above described Tract of Land situate on the main ob^l nch Allegany River in the late purchase Northumberland County District N. 6 containing one thousand & thirty eight acres & allowance of six Pr Cent

To Jn^r Brodhead D.S.

Daniel Brodhead Esq^r
Surveyor General

IN TESTIMONY that the above is a copy of the original remaining on file in the Department of Internal Affairs of Pennsylvania, made conformably to an Act of Assembly approved the 16th day of February, 1833, I have hereunto set my Hand and caused the Seal of said Department to be affixed at Harrisburg, this twenty eighth day of December 1903.

George D. Brown
Secretary of Internal Affairs.